



MARCH 2, 2014

"We Run With Heroes"™

2014 PROGRAM

You'll find eleven times the service

and more...



GMC



Das Auto.



BMW



Mercedes-Benz



BUICK



open your mind.



NISSAN



HYUNDAI



for life



Garlyn Shelton
BRYAN TEMPLE
Mercedes-Benz of Georgetown

Mercedes-Benz of Georgetown/Smart/Sprinter • IH-35 at Westinghouse Road • (512)930-6150 • Georgetown
Garlyn Shelton Cadillac/Mazda/Volvo/BMW/Buick/GMC • 5700 SW H.K. Dodgen Loop 363 • (254)771-0128
Garlyn Shelton Nissan • 5420 Midway Drive • (254)773-4828 • Temple
Garlyn Shelton Volkswagen • 5620 S. General Bruce • Temple, Texas • (254)773-4634 • Temple
Garlyn Shelton Mazda/BMW/Volkswagen/Hyundai • 3100 Briarcrest Drive • (979)776-7600 • Bryan

www.garlynshelton.com



THE ARMY MARATHON

The Army Marathon – presented by Garlyn Shelton – will honor the service and sacrifice of our military servicemen and women. This exciting event will be held on March 2, 2014 coursing from Killeen to Temple, Texas in the vicinity of Ft. Hood – the largest active duty armored post in the United States military.

Our Mission is to honor the service and sacrifice of all military personnel, their families and survivors by raising funds through The Army Marathon in order to support charitable activities for the broader military community. Your participation and support will help assure the success of the 2014 event and will forever enhance the lives of the veterans and families served by the benefiting charities.

SPONSORS AND VENDORS

We would like to thank those sponsors and vendors who have given valuable time and resources and participated in our Expo:

- Garlyn Shelton Automobile Dealerships
- Belton Chamber of Commerce
- City of Temple
- Harker Heights Chamber of Commerce
- Killeen Civic and Conference Center
- Rogue Running
- ASCO
- Central Texas College
- CeraSport
- CGI
- Clif
- Family of John Bayer
- Metroplex
- Military Child Education Coalition
- Navy Federal Credit Union
- Scott & White Healthcare Systems
- Texas A&M - Central Texas
- Tragedy Assistance Program for Survivors
- USAA
- Revolution Spirits
- Woodhouse Day Spa
- National Mounted Warfare Foundation
- Temple Bottling Company, Dr Pepper
- Semper Fi Fund/Americas Fund
- Marathon Charms and Gifts
- Cool Shades
- BottleSox/NicheLabs
- Team RWB
- Sam's Club, Harker Heights

FROM THE RACE DIRECTOR

To: All Runners, Friends, and Family

From: Ed Bandas, Race Director, The Army Marathon

On behalf of our Board, Volunteers, and our Advisor Team, we welcome you to The Army Marathon! We are incredibly proud to have had one of the largest debut marathons in Texas right here in Bell County last year. We are even prouder to host The Army Marathon II this year. The fact that we all benefit our men and women who served or are serving their country makes it even more special.

While you visit Central Texas, please say "Thank You" to all of the folks who help carry out this great event. Without the support of folks like The Cities of Killeen, Harker Heights, Belton and Temple, law enforcement agencies including these Cities' Police/Fire/EMS services, Bell County Sheriff's Office, Texas Department of Public Safety, Texas Department of Transportation, and medical services such as Scott & White, and all of the volunteers that you will meet along the way on the marathon route, we would not have been able to bring you these events. We hope that you have a moment to enjoy our beautiful county while you run through all of the communities that support Fort Hood, "The Great Place."

We are especially grateful to the sponsors this year. These Inaugural Sponsors not only had the faith to return again this year even stronger than last year, they also truly carry the banner of support for our military heroes. We are honored that they choose to join us in honoring our active duty members, our National Guardsmen, and our veterans. Please visit them and thank them for stepping up!

Don't forget to visit Texas Brazos Trail Region at www.texasbrazostrail.com to see all the wonderful sites that Central Texas has to offer. This event is only better because of the tireless assistance of their members, including Temple Convention and Visitors Bureau, Belton Chamber of Commerce, Harker Heights Chamber of Commerce, and Killeen Civic and Conference Center and their other great members.

So go out there and RUN WITH HEROES!

Very Respectfully,

Ed Bandas

LETTER FROM ADVISOR TEAM

Dear Participants and Spectators of The Army Marathon II,

March 2, 2014, marks both the second running of The Army Marathon and Texas Independence Day. Nearly two centuries ago a group of brave men decided to cast their lots for freedom—from their effort and sacrifices came the Republic and later the great State of Texas.

Today another tough and hardy band gathers to run The Army Marathon, Half marathon, or 5Klicks. Some do it for the personal challenge, some to help raise funds for a worthy military-related charity, and some to honor our veterans. Whatever the reason, all of them provide visibility and support for our military heroes. Their participation is a source of great pride to all of us who have served in uniform.

We welcome all visitors to Central Texas, and wish every runner the very best of luck—for you run with heroes!

Sincerely,

Lieutenant General Dave Palmer, United States Army (Retired)

Lieutenant General Donald Jones, United States Army (Retired)



FOR YOU, WE'LL GO THE DISTANCE.

Today and every day, you put forth your all, and we'll be right there with you. And with over 240 branches worldwide, we're always there for you, providing unmatched financial products and services.

- > 24/7 live phone support
- > Over 55,000 free ATMs nationwide
- > Mobile Banking* and free Bill Pay



ARMY
MARINE CORPS
NAVY
AIR FORCE
COAST GUARD
DoD

VISIT US TODAY!

Market Heights Shopping Center
201 E. Central Texas Expressway, Suite 690, Harker Heights, TX

Fox Creek Plaza
3210 E. Central Texas Expressway, Suite 404, Killeen, TX

Five Hills Shopping Center
3010 E. Highway 190, Suite 148, Copperas Cove, TX

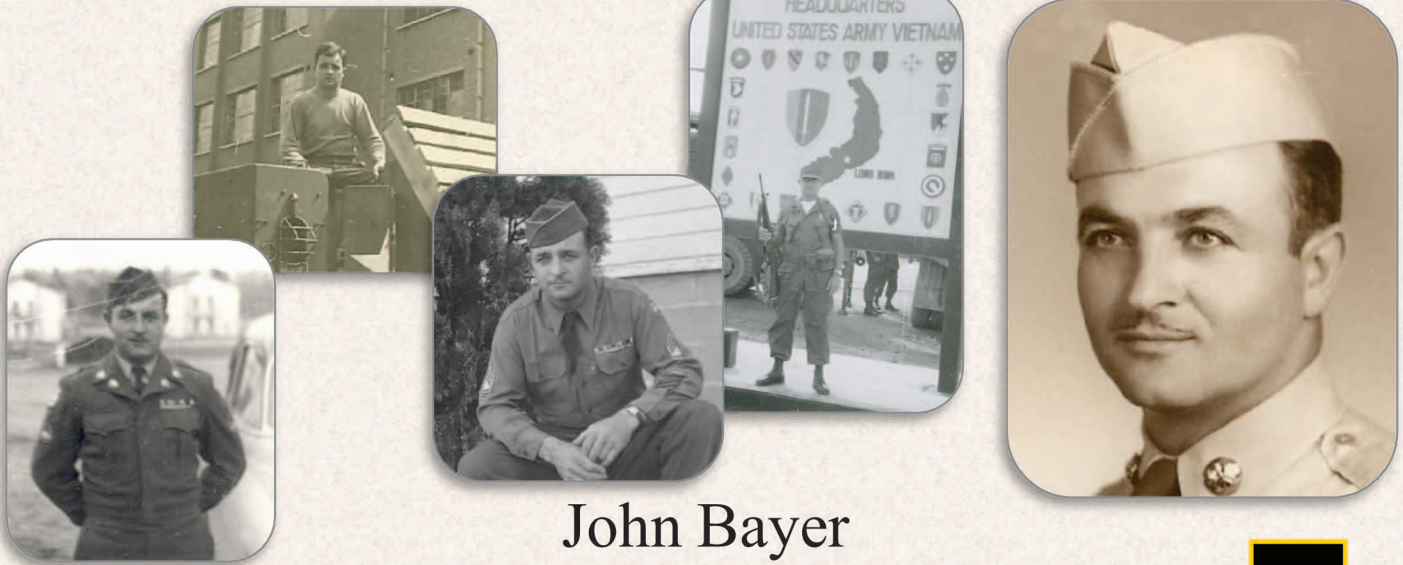
navyfederal.org 1.888.842.6328

Federally insured by NCUA. *Message and data rates may apply. Terms and conditions are available. To stop receiving messages, text **STOP** to **4NFCU (46328)**. Message frequency depends on account settings. To get help with Mobile Banking, text **HELP** to **4NFCU (46328)** or call us toll-free at **1-888-868-8123**. App Store™ is a service mark of Apple, Inc. Android™ is a trademark of Google, Inc. Amazon, Kindle, Kindle Fire, the Amazon Kindle logo, and the Kindle Fire logo are trademarks of Amazon, Inc. or its affiliates. This app was not created or endorsed by Amazon.
© 2014 Navy Federal NFCU 12882 (2-14)



The Family of John Bayer

Thanks and Honors Our American Military



John Bayer

9/11/1918 – 11/17/2005

US Army – WW II, Korea, Viet Nam



Rotary Club of Harker Heights



"Service Above Self"

Our Mission

The mission of Rotary International is to provide service to others, promote integrity, and advance world understanding, goodwill, and peace through its fellowship of business, professional, and community leaders

The Four-Way Test

of the things we think, say or do

1. Is it the **TRUTH**?
2. Is it **FAIR** to all concerned?
3. Will it build **GOODWILL** and **BETTER FRIENDSHIPS**?
4. Will it be **BENEFICIAL** to all concerned?



ROTARYCLUBOFHARKERHEIGHTS@GMAIL.COM

METROPLEX SILVER Classic

5K RUN • 3K WALK

Register at mplex.org or call (254) 519-8202 for more information.

REGISTER EARLY:

\$20

General: \$20 before Feb. 27, \$25 after Feb. 28
Active Duty Military: \$15 before Feb. 27,
\$20 after Feb. 28

Metroplex Health System is picking up the pace to promote wellness in Central Texas. All proceeds of the Metroplex Silver Classic support our efforts to educate and promote health and wellness through free immunization clinics, screenings, health fairs and wellness classes. Registration price includes a goody bag, BMI screening, a Silver Classic T-shirt along with snacks and refreshments.

Can't run in the Silver Classic?

You can still participate by registering as a "Virtual Runner". Register as a virtual runner for \$25 and receive a goody bag and race T-shirt by mail!

PART OF THE CEN-TEX RACE SERIES
SUNDAY, MARCH 16th



254.526.7523 (Main)
2201 S. Clear Creek Rd.
Killeen, TX | 76549

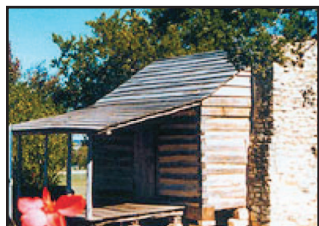
METROPLEX HEALTH SYSTEM
SCOTT & WHITE HEALTHCARE

Register at mplex.org
or call (254) 519-8202
for more information.

KILLEEN HISTORY



William "Wild Bill" Scoggins brought something extra to the May 15, 1882, birth of the city of Killeen, Texas. He brought his lariat.



When the steam engine of the Gulf, Colorado & Santa Fe Railroad chugged into town, Wild Bill was spotted on the cowcatcher. As the train screeched to a stop, Wild Bill jumped to the ground, uncoiled his lariat and proceeded to lasso the smokestack of the Santa Fe engine. All this occurred while a crowd of onlookers cheered, tossed their hats in the air and

generally celebrated the birth of another railroad town.

This began the first phase of Killeen's existence. The second phase was to come in 1942 with the opening of Camp Hood, giving credence to the catchphrase that the history of Killeen is really "a tale of two cities."

Although the railroad had platted the townsite several months before, few lots had been sold. But by 1886, the town boasted a population of 300 and by the end of the 1880's, that figure had climbed to 800.

It did not take Killeen long to establish itself as a shipping point for agricultural products grown in about a 20-mile radius. Cotton became king and remained so until the establishment of Camp Hood in 1942. Grain, wool and other farming and ranching products also figured prominently in the economy of the town's first 60 years.

In 1930, Killeen's population was 1,200, and in the next 10 years, it climbed to 1,265. Then, two years later, the

boom hit with the establishment of Camp Hood, a military post which opened on September 18, 1942, as a tank destroyer center. By 1950, the population had jumped to 7,045. The 2000 U.S. Census lists the city's population at 86,911.

When Pearl Harbor was bombed on December 7, 1941, it not only had a decided effect on the United States and the world at large, but it also directly affected Killeen and its future. After the United States became involved in World War II, there developed a need for a military post to train soldiers in tank destroyer tactics. The area west and north of Killeen was selected as the site for Camp Hood, named for the Confederate general, John Bell Hood. The initial Army installation covered 160,000 acres, with many families having to leave their homesteads and find new homes. It also cut out almost all of the best farming country that Killeen catered to and the economic base quickly changed from agricultural to military.

Following the end of World War II, Camp Hood personnel strength dwindled down to below 4,000, and there was a big question as to what would happen to the camp. In 1950, the Department of the Army declared the Killeen military installation as a permanent post and it automatically became Fort Hood. Things started to boom for the area.

With tremendous growth in retail trade and in dining facilities in the decade of the 90's, Killeen has spread its trade area to cover a 100-mile stretch of Central Texas, and, as it did as an agricultural center, pulling people in to take advantage of the special services the city offers.

But all along, from the time of Camp Hood, Killeen's first and foremost concern has been its military neighbor, now Fort Hood, and the many friends that the diverse military population brings, making Killeen a truly cosmopolitan city.



Benefiting



A SOLDIER'S CHILD
FOUNDATION

Presenting the 3rd annual
Spartacus Dash
May, 31st, 2014 • Belton, TX

Register online @ register.profitereventservices.com
Find us on facebook for event details and updates
www.facebook.com/ASCOSpartacusDash

THE ARMY MARATHON III

MARCH 1, 2015

FULL MARATHON

HALF MARATHON

5KCLICKS

Benefitting veterans and their families.

Early registration opens
**March 3 - 31, 2014. Sign up now for
the special pre-registration prices!**

www.thearmymarathon.com

**For more information, visit us on
Facebook at The Army Marathon**

To become a sponsor, please email us at
info@thearmymarathon.com or call (210) 632-2800



THE WOODHOUSE

day spa[®]

NOLAN CREEK

Gift Cards Available At

NOLANCREEK.WOODHOUSESPAS.COM

OR CALL 254.933.2275

RELAX. REFRESH. RESTORE.

MASSAGES	FACIALS	SPA PARTIES
SPA PACKAGES	BODY TREATMENTS	MICRODERMABRASION



BELTON

AREA
CHAMBER of COMMERCE

About Belton

Founded in 1850, Belton is the Bell County seat and has historically served as both the local government

center of the county and as a marketplace and shipping point for area farmers and ranchers. Between 1860 and 1880, Belton was a regional center for the cattle boom and even became an important stopping point for cattle herds along the famed Chisholm Trail. Between 1880 and 1930, Belton was a processing center for the regional cotton crop which became the county's principal cash crop during this period, particularly in the blackland prairie region in east Bell County. Belton's long and distinctive past is evidenced by the city's many historic homes and commercial buildings. Charming storefronts characterize the historic commercial district, the center of which is the impressive Bell County Courthouse, built in 1885.

Today, Belton is home to an estimated 19,000 people. New residents continue to be drawn to Belton by outstanding schools, great parks and by the University of Mary Hardin-Baylor, also located in Belton. Chartered by the Republic of Texas in 1845, the historic college campus provides both students and area residents with educational, cultural and recreational opportunities. Providing a natural backdrop to historic Belton are over 160 acres of parkland located throughout the city.

Situated along Belton Lake, Belton is a city abounding with parks and recreational opportunities. The beautiful Nolan Creek meanders through central Belton where residents and visitors can enjoy a walk

along the Nolan Creek Hike and Bike Trail. This unique 1.5 mile trail provides a scenic tour through three city parks. The trail offers residents and visitors beautiful views of the Nolan Creek, as well as numerous opportunities to take a break while reading about the historic Chisholm Trail in one of ten pocket parks located along the trail.

Active sporting enthusiasts will be impressed with Belton's outstanding sports fields, park complexes and water-based recreational activities. In 2006, the City of Belton received over \$370,000 in grants from various state and private organizations allowing continued improvement to local parks and fields. By leveraging city funds with grants and building community partnerships with citizens and community organizations, the City of Belton continues to enhance the quality of life for all its citizens.

Also available to visitors and residents is the T. B. Harris Community Center, a project recognized with numerous awards. The completely renovated facility features multiple rooms offering state of the art accommodations for business meetings, while at the same time providing ample space and beautiful vistas into the ten-acre park surrounding the school. The building is well suited for conferences and training events while providing an idyllic setting for wedding receptions, parties and reunions.

Come to Belton and enjoy its small town charm and natural beauty! What are you waiting for?

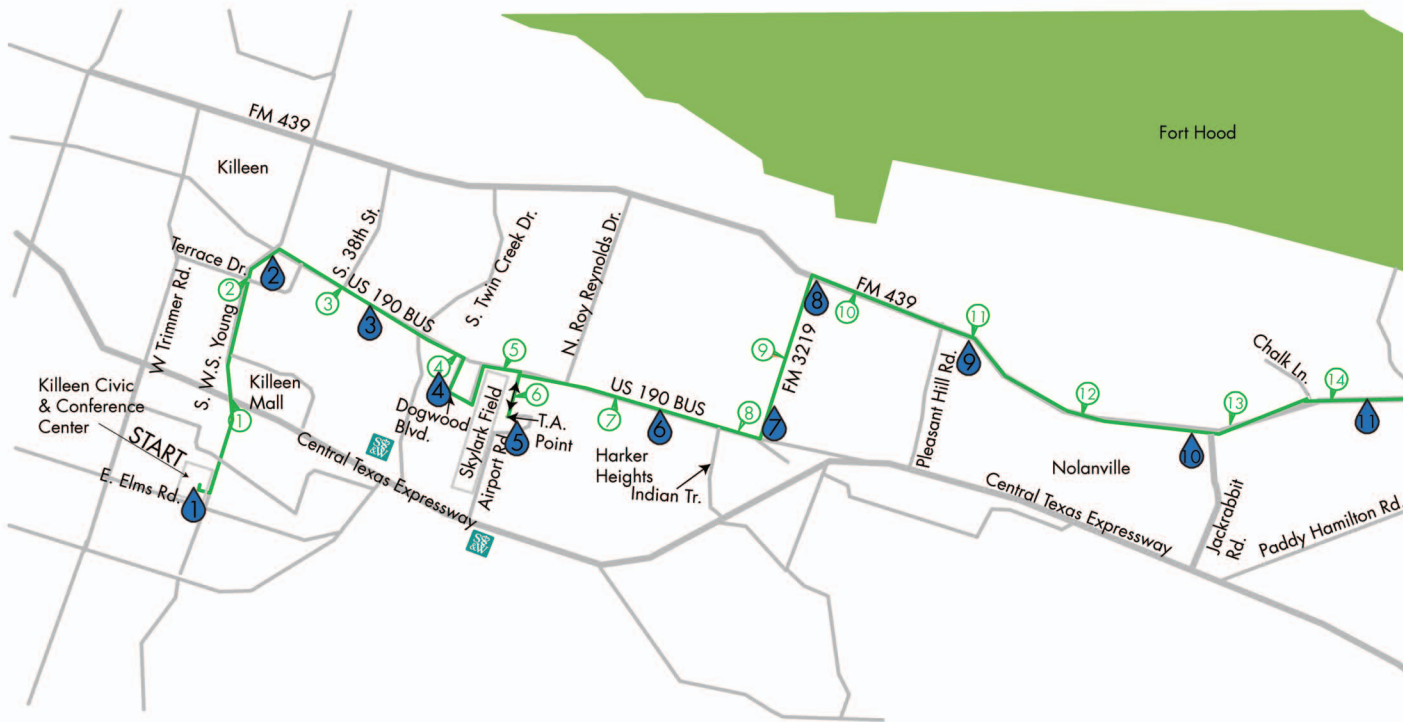
\$15 GIFT CARD!

VALID TOWARDS ANY RETAIL PURCHASE OF \$75 OR MORE
cannot be combined with other offers. no cash value. expires 5/31/13



**ROGUE
RUNNING**

AUSTIN: 500 San Marcos St. 78702 / 512.493.0920
CEDAR PARK: 2800 E. Whitestone Blvd. 78613 / 512.777.4467
WWW.ROGUERUNNING.COM



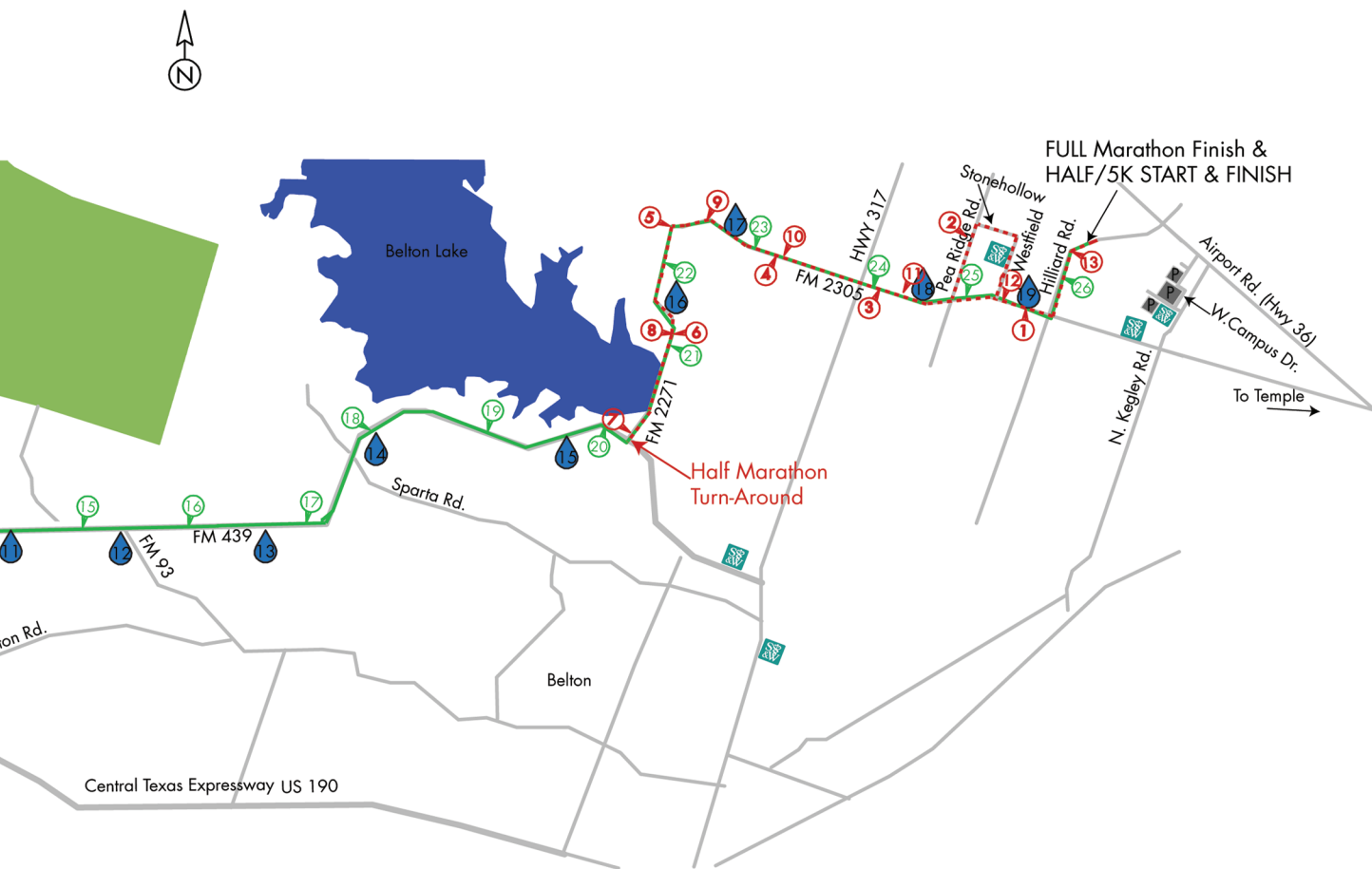
-  Army Marathon Race Route
USATF Certified Route: TX12213ETM
-  Army Half Marathon Race Route
USATF Certified Route:
-  Marathon Race Direction
-  Water Stop (Approx. Location)
-  Marathon Mile Marker (Approx. Location)
-  Half Marathon Mile Marker (Approx. Location)

TheArmyMarathon.com

Date: Sunday, March 2, 2014

Marathon Start Time: 0700hrs
 Start Location: Killen Civic and Conference Center
 End Location: Hilliard Rd., Temple, TX

Half Marathon Start Time: 0700hrs
 5 Klicks Start Time: 0730hrs
 Start & Finish Location: Hilliard Rd., Temple, TX



The Marathon Course Description

The 2014 Army Marathon begins at the Killeen Convention Center at 0700 hrs, on South WS Young in Killeen. The course heads north on WS Young Drive through Killeen, home to Fort Hood, the largest military post in the free world.

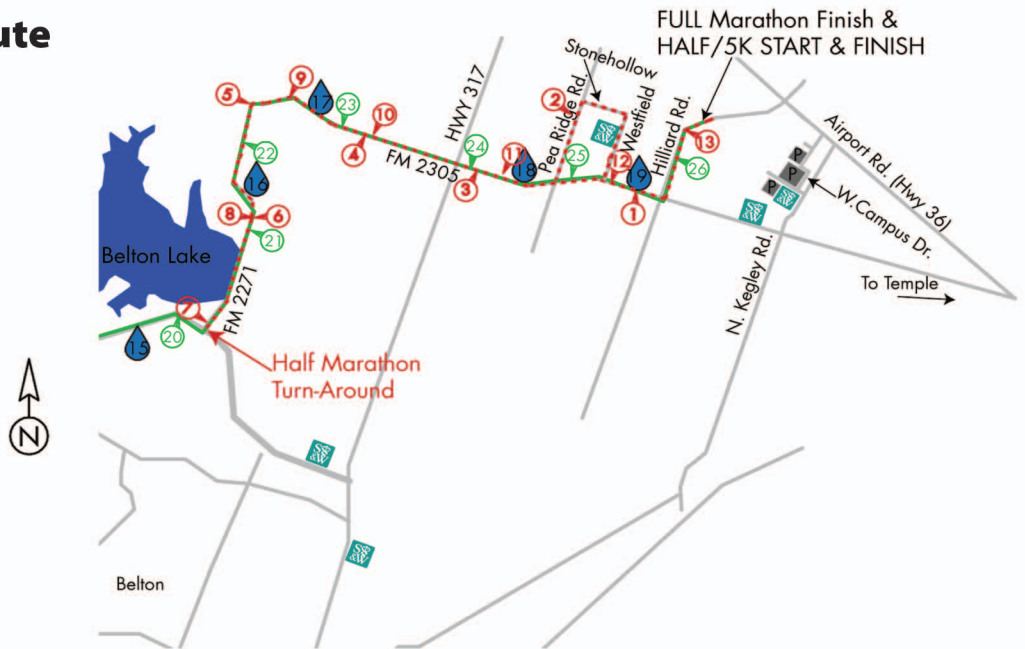
The closing miles of the route continue on FM 2305 to Hilliard Rd and then north on Hilliard Road to the finish line just south of Highway 36. Hilliard Road is the site of the developing Temple Bioscience Center and home to the Army Marathon Finish Line and Post-Race Festival.

The point-to-point route is generally rolling with a net downhill, with a net elevation loss of 273' or approximately 10.5' per mile. The highest point on the course comes at approximately 1.70 miles into the route, near the intersection of WS Young and Zephyr Road. The lowest point on the course comes at approximately mile 16.70 on FM 439 between Sparta Road and the Belton Lake Dam.

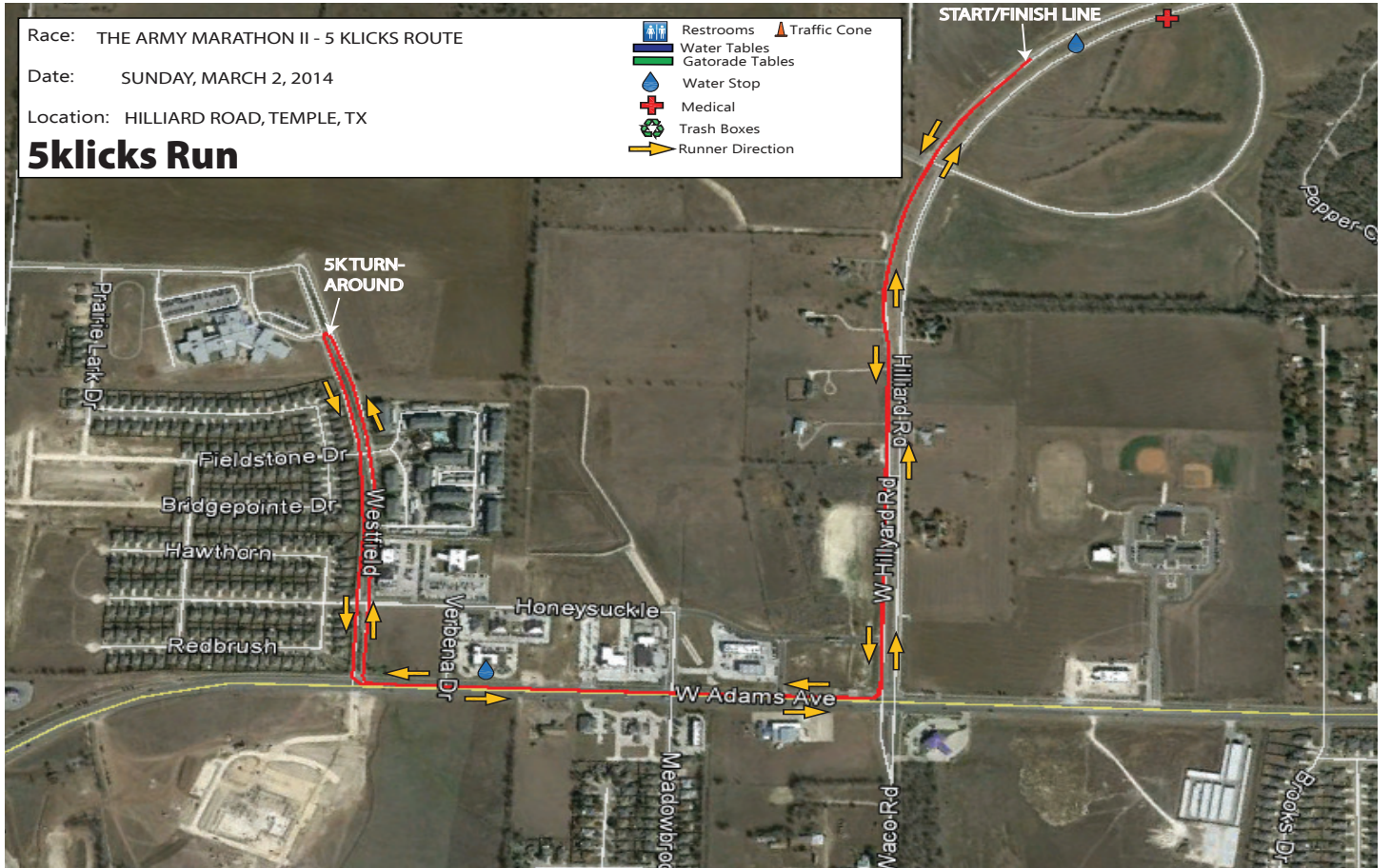
There are 19 water stations located throughout the course, approximately every 1.0 – 1.5 miles. Each water stop will feature an electrolyte replacement drink followed by water stops and Scott & White Medical personnel. Each water stop will also offer portable restrooms.

Runners should bring their own energy gels if they have a preference but ClifShots will be available at two water stations along the course.

Half Marathon Route



<ul style="list-style-type: none"> — Army Marathon Race Route USATF Certified Route: TX12213ETM - - - Army Half Marathon Race Route USATF Certified Route: 💧 Water Stop (Approx. Location) 📍 Marathon Mile Marker (Approx. Location) 📍 Half Marathon Mile Marker (Approx. Location) 	<p style="text-align: center;">TheArmyMarathon.com</p> <p>Date: Sunday, March 2, 2014</p> <p>Marathon Start Time: 0700hrs Start Location: Killeen Civic and Conference Center End Location: Hilliard Rd., Temple, TX</p> <p>Half Marathon Start Time: 0700hrs 5 Klicks Start Time: 0730hrs Start & Finish Location: Hilliard Rd., Temple, TX</p>
--	---



THE BEST MINDS WORKING AS ONE.™



Teamwork helped Deirdra win an uphill battle.

After years of neglecting her health, Deirdra was diagnosed with high blood pressure by our ER team at Scott & White Healthcare. Her primary care doctor encouraged her to get in shape and helped monitor her progress along the way. With support and motivation from her care team, she eventually lost 125 pounds. Working toward a common goal, they helped Deirdra attain heights that once seemed out of reach. Learn more at workingasone.sw.org.



SCOTT & WHITE
Healthcare



The City of Temple is conveniently located in the heart of Central Texas. We take pride in the continued vibrancy of our economy, the safety and security of our residents and visitors and the continued improvement of the city's services and facilities.

Over the past 125 years, Temple has grown into a center for medical excellence, bioscience research and education. This economic growth has been a catalyst for growth in arts, culture and entertainment. New venues for the art enthusiast continue to manifest throughout the city. Musical and performing arts continue to expand and now include the Temple Symphony Orchestra, Temple Civic Theatre, Cultural Activities Center and more. Along with these attractions, the city hosts several fairs and festivals that attract visitors from around the state.



Visitors to Temple appreciate our central and accessible location, temperate climate, excellent hotels and dining, great shopping, and family-friendly attractions. Residents value our beautiful neighborhoods, well-managed development, cultural diversity and our excellent schools, parks and libraries.

Whether a visitor or resident, all will agree that Temple's greatest asset is its people. The good people of Temple are friendly, progressive, cooperative and involved in their community. With the support and commitment of so many community stakeholders, it will continue to thrive as a growing urban center, without losing sight of its historic roots.

Welcome to Temple and enjoy your stay!



The area now known as Harker Heights was once owned by Pinckney R. Cox and Harley Kern. In fact, the city was named after Harley Kern. In 1957, Cox and Kern

subdivided their land and began selling the lots. The area was incorporated on September 24, 1960, and Cox became the first mayor. Harker Heights annexed the Comanche Hills Utility District in December 1988. The city is part of the Killeen Temple Fort Hood Metropolitan Statistical Area. Harker Heights offers numerous recreational opportunities for residents and visitors. Among the local parks and playgrounds are the Carl Levin City Park, Kern Park, Skipcha Park, Cardinal Greenspace, Summit Soccer Complex, Booker Greenspace, and Sprint Park. The Stillhouse Hollow Lake provides facilities for fishing, hiking, camping, hunting, picnicking, and swimming. Golf lovers can also visit the Killeen Municipal Golf Course.

TEXAS A&M
UNIVERSITY
CENTRAL TEXAS™

new campus
NEW CHAPTER

for Life's Next Chapter™
254.519.5400 | www.ct.tamus.edu



A commitment we salute

As a dedicated member of the Central Texas community, and a long-standing IT and business partner to all military branches, CGI is extremely proud to sponsor the 2014 Army Marathon.

We applaud your commitment to honor the service and sacrifice of our military servicemen and women and to support veteran services.



cgi.com

Experience the commitment®

ABOUT BELL COUNTY

Bell County is centrally located along the I-35 corridor. Bell County is serviced by two major railroads and offers state-of-the-art medical facilities, several excellent colleges, and a large regional airport, all of which make it a great choice to call home. Bell County is home to Fort Hood. With a capacity of 50,000

troops, it is the largest military installation in the free world. The 2010 Census put Bell County's population at 310,325 - the 16th largest of Texas' 254 counties. Bell County grew by 30.4% from 2000 to 2010. The 2012 population is estimated to be over 315,000, and it continues to grow, fueling a strong and stable economy.

COUNTY HISTORY

Bell County was created from Milam County just five years after Texas entered the Union. County Commissioners chose a county seat on the banks of Nolan Creek and named it Nolanville. Two years later, January 12, 1852, the town's name became Belton and it was incorporated.

Belton's first settlers built houses, stores, saloons, and a hotel and prospered until the Civil War when they lined up behind the South. When things went bad for the South, Belton also experienced tough times. By the 1880s, Belton had recovered from the war and began to flourish once again. It was the largest town in Bell County and had a brisk economy. Belton would have become a boom town if it had a railroad, but it only reached its doorstep as the Santa Fe Railroad crossed the county line on the eastern edge near Rogers.

During the mid to late 1860s, the Chisholm Trail cut through central Bell County along a route between the present day cities of Belton and Salado. The 1860's also saw the establishment of the female religious commune known as the True Church Colony which flourished until about 1900.

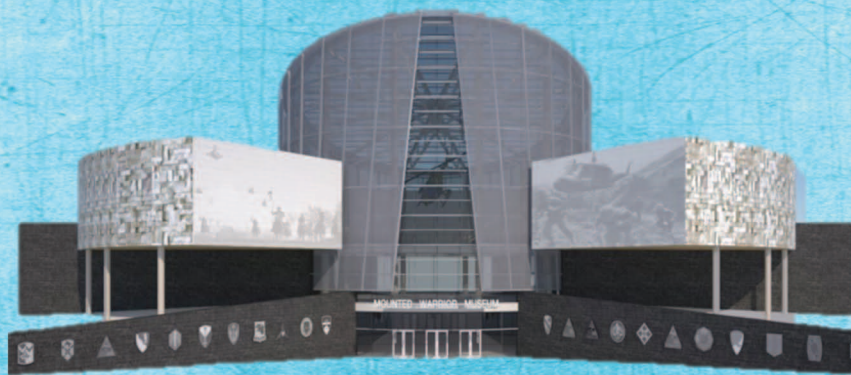
Between 1877 and 1915, ten railroads considered placing tracks through Bell County, but only two companies actually came to the area. At a time when railroads made and broke rural communities, the acquisition of a railroad was important. The Missouri, Kansas, and Texas Railroad, known as the Katy, went through Belton, while the Gulf, Colorado, and Santa Fe Railroad, known as the Santa Fe, established a new town just north of Belton, known as Temple.

To provide the railroad employees with health care, Santa Fe hospital became the city's first hospital in 1891. Then in 1896, King's Daughters Hospital was established. Temple Sanitarium began in 1897 and later evolved into Scott & White. In 1983, Santa Fe combined with Scott & White.

The first woman elected as governor in the United States was Miriam Amanda Wallace Ferguson. Ms. Ferguson was born near Little River and she served from 1925-1927 and 1933-1935. Her husband, James Edward Ferguson was born near Salado and elected as governor from 1915-1917.

The Army Marathon and the Mounted Warrior Museum

We Run With Heroes...and Tell Their Untold Stories



Learn More or Donate:



thearmymarathon.com



nmwfoundation.org



USAA
FINANCIAL CENTER

Proud to serve our military members. Honored to serve our community.

USAA has served the financial needs of the military community for more than 90 years. Whether you are deploying, PCSing, or leaving the military, we are committed to serving you closer to home.




Visit a USAA Financial Center today.

Fort Hood Street • 900 W. Central Texas Expy, Killeen, TX

The Shops of Killeen • 2309 E. Central Texas Expy, Killeen, TX

usaa.com/killeen • 800-531-USAA



Our strength lies
in our people and their
dedication to service.

www.garlynshelton.com

Garlyn Shelton

BMW • Buick **Cadillac • GMC**
Hyundai • Mazda • Mercedes-Benz • Nissan
Smart • Volkswagen • Volvo

Mercedes-Benz of Georgetown/Smart/Sprinter • IH-35 at Westinghouse Road • (512)930-6150 • Georgetown
Garlyn Shelton Cadillac/Mazda/Volvo/BMW/Buick/GMC • 5700 SW H.K. Dodgen Loop 363 • (254)771-0128
Garlyn Shelton Nissan • 5420 Midway Drive • (254)773-4828 • Temple
Garlyn Shelton Volkswagen • 5620 S. General Bruce • Temple, Texas • (254)773-4634 • Temple
Garlyn Shelton Mazda/BMW/Volkswagen/Hyundai • 3100 Briarcrest Drive • (979)776-7600 • Bryan